

## FLOW MEASUREMENT & CONTROL

### Flowmeters Code 452G

Conflow is renowned the world over as the leading supplier of specialist components and systems for dust suppression, fire suppression and all aspects of water control in underground coal Mining.

Today Conflow products can be found operating both on the surface and underground in all the major mining industries, from coal to gold, in more than 30 countries around the world. Furthermore, wherever minerals are moved in bulk – such as quarries, power stations and steel works - Conflow products are helping to reduce the negative impact on the local environment.

At Conflow our aim is to provide you with a comprehensive range of services to meet your individual needs.



### Description

The **Conflow Code 452G** - Flowmeter indicates the volume rate of flow of fluid in a pipeline or hydraulic system.

The meter is a variable orifice plate type unit, which uses the pressure drop across a spring loaded orifice plate to create the movement of a pointer across a dial.

The orifice plate assembly houses a bar magnet, the movement of which is transferred to a disc magnet fitted to the pointer spindle.

The magnetic link enables the pointer mechanism to be in a dry area and a minimum number of moving components are in the fluid.

This design enables hydraulic oscillations and aggressive media to be catered for.

### Typical Applications

- Monitoring water or oil flows to the various systems on coal cutting machines, AFC gearboxes and roof bolting machinery
- Monitoring water lines for dust suppression, motor cooling, ITP systems and fire fighting

## FLOW MEASUREMENT & CONTROL

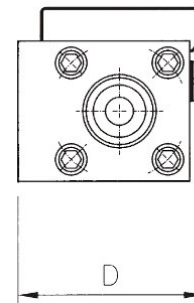
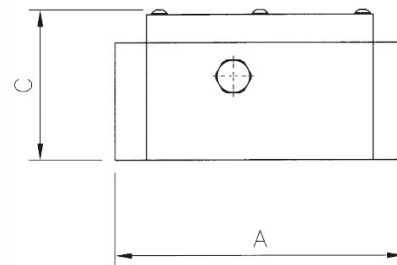
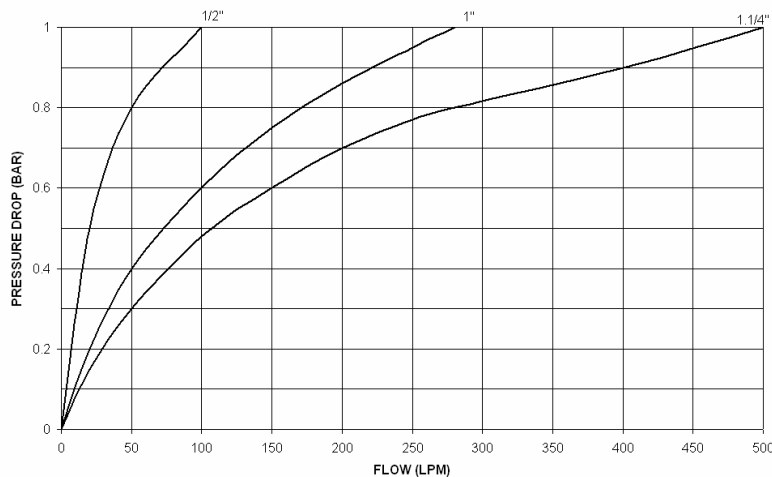
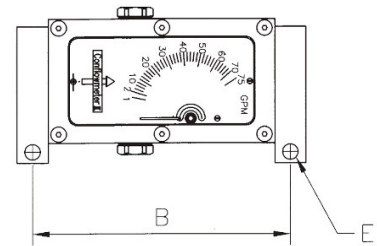
### Flowmeters Code 452G

#### Features

- 1/2" to 3" sizes available
- Maximum working pressure 315 bar (1" unit)
- Individually calibrated to  $\pm 2\%$  of indicated reading
- Heavy duty construction
- Glycerine filled to damp needle pulsations and prevent misting of viewing window
- Units equipped with side ports, for pressure gauge fitting

#### Specifications

Unit Size	A	B	C	D	E	Maximum Working Pressure (bar)	WEIGHT
1/2"	165	148	67	74	11.1	315	3.81 Kg
1"	169	149	83	85	11.1	315	4.61 Kg
1 1/4"	205	185	107	110	11.1	275	11.23 Kg
1 1/2"	205	185	107	110	11.1	275	11.07 Kg
2"	302	262	135	125	13.5	140	25.5 Kg



The information on this data sheet is accurate to the best of Conflow's knowledge; however we reserve the right to alter the product specification at any time. For any specific updated detail, please contact us.